

Forest Grove United Methodist Church

Messenger

April 2007

1726 Cedar St., Forest Grove, OR 97116-2434
e-mail: fgumc@teleport.com

Phone: 503-357-2689 FAX: 503-357-8410
website: www.forestgroveumc.org

Holy Week at Forest Grove UMC

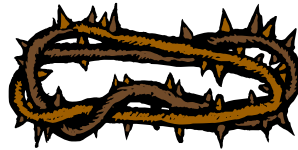
PALM/PASSION SUNDAY, APRIL 1ST

The focus of this service is on the Passion, the Crucifixion of Jesus and what it means to us today. We will celebrate Holy Communion this day.

GOOD FRIDAY, APRIL 6TH

Ecumenical Good Friday Stations of the Cross service at St. Anthony's Catholic Church, 1660 Elm St., Forest Grove, 12:00 noon.

Join us in the Sanctuary for a viewing of *The Passion of Christ* at 6:00 p.m. This is not a movie for children or even some youth. Childcare will be provided and there will be an opportunity for discussion afterward with *Pastor Dan*.



EASTER SUNDAY, APRIL 8TH

8:30 a.m. Breakfast, organized by *Lois Oakberg* & *Patty Davie*. Come break the fast and join the feast!

9:00 a.m. Bring the children for the traditional Easter Egg Hunt. The children will gather sometime after 9 to hear Pastor Dan's story of "God's Easter Surprise" before being sent out to discover eggs!

10:00 a.m. **Festival Worship** with hand bells and choir celebrating the Resurrection.

We will be **receiving new members** into the church on Easter Sunday. If you would like to join, please speak to *Pastor Dan*.

MAUNDY THURSDAY, APRIL 5TH

Worship at 7:00 p.m.
We will commemorate the last meal Jesus had with his Disciples.

EASTER BREAKFAST APRIL 8TH AT 8:30 A.M.

Last chance to sign up to help with our traditional Easter celebration!

There are opportunities for bakers, casserole makers, kitchen helpers, dishwashers, and more.

Please look for sign-up sheets in the Fellowship Hall. For more information, call *Lois Oakberg*, 503-357-8129 or *Patty Davie*, 503-357-3185.

EASTER CROSS CHANGE

Please note that we are decorating the Easter Cross differently this year. Instead of a few people going around to gather flowers, we are asking the congregation to bring them in to church on Easter Sunday and we will all join in "directed decorating" of the cross during worship. If you have any questions, please contact me at 503-357-2596 or by e-mail . rosepad76@comcast.net

Patti Rose,
Worship Committee chair

THE PASTOR'S PAGE

I once heard a pastor pray this prayer at the beginning of worship:

Lord, let something happen here today that's not in the bulletin, something that we've not planned, but that You've planned. Let your Holy Spirit surprise us and move among us gathered here this day in Jesus' name. Amen.

For people who are planners, who like things to turn out as they've planned, this is an unsettling prayer. It acknowledges, even asks, that God will do what God will do, no matter our plans.

When I think of the Easter story that we are about to commemorate, I think of all the surprises that happened for the Disciples during that last week, that last day of Jesus' life. The greatest surprise would be what happened at dawn, on the first day of the week, when the women went to the tomb. Could it be true, what Jesus said would happen?

The Resurrection was not in the Disciples' worship bulletin. Although Jesus said it more than once, they didn't really seem to believe that Jesus would conquer death in the way that he said he would. This was not in their script.

For the Disciples of Jesus, the surprises just kept coming. For disciples of Jesus, they're still coming.

What things that are of God, and God's Holy Spirit, are surprising you today? What events, experiences, persons that brought you life, hope, challenge, courage, or wonder, did you not expect today?

I do not plan for anything to go "wrong" with our worship service on Easter morning. But when God's Spirit arrives, things do happen that we do not expect.

I'll be looking for that on Easter morning, Easter day. I pray that I'll be looking for that every day.

In Hope and Confidence,

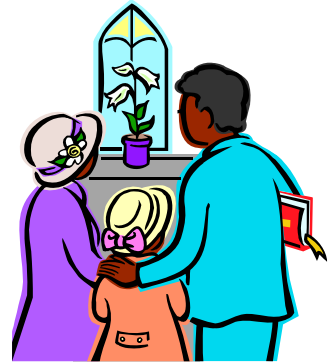


Pastor Dan

FROM THE ALTAR TO THE WORLD

Labor Day 1989, I traveled to the United Methodist Camp at Wallowa Lake to attend an event called "Convocation on White Racism." It wasn't an easy weekend. Even with all the ease of diversity that is the hallmark of my extended family, it was startling to discover how frequently words and emotions that are part of institutional racism continued to haunt my life. Then, there's the discovery 18 years later of the difficulty of still needing to be ever vigilant about language and seemingly small actions.

We can get caught up in the story of "Amazing Grace" and give thanks to God for persons such as William Wilberforce and more recently Martin Luther King, Jr. and others who have helped us all take gigantic strides on a journey to equality. Our hearts can be aghast at stories of child slavery that still exists, such as the stories told by Oprah of child slavery in Ghana. You can believe, at the very core of your being, as I do, the words found in Galatians 3:26-28 "for in Christ Jesus you are all children of God through faith. As many of you as were baptized into Christ have clothed yourselves with Christ. There is no longer Jew or Greek, there is no longer slave or free, there is no longer male and female; for all of you are one in Christ Jesus." We can be lulled into the idea that hate and discrimination is in our community's past, our personal past, and then. . .



Something ugly happens. The news has been full of racial incidents at the state basketball tournament. It seems beyond imagination that such a thing can happen, but it is very real to the Roosevelt High School students facing obscene gestures and racial slurs directed at them. John Canzano, Oregonian sports columnist, urges us all to become involved through conversations with those we know best. "We also need to talk to our children. And each other. This kind of discussion needs to go down privately, where we can get raw, and authentic, with each other on topics that make us publicly uncomfortable."

Lest we become too complacent, let us not leave this up to public officials and administrators, but keep the conversation flowing as a natural extension of our worship and discipleship.

Your servant in Christ,
Deacon *Rhoda Pittman Markus*

SWISS STEAK DINNER, SILENT AUCTION & CRAFT SALE

This is the time of year to Spring into action and plant our feet firmly on the ground as we prepare for the Annual **Swiss Steak Dinner!** The Dinner will be on Saturday, April 21st from 4-7:00 p.m. Volunteers will be recruited and needed for all sorts of jobs.....so *Martha Tunall* will be the person to contact during the coffee hours each week or at 503-357-0197 or mtunall@comcast.net

We are looking for donation items for this year's **Silent Auction** held every year with the Swiss Steak Dinner. If you have auction items, please turn them in to the church office along with your name, phone number and, very important, the value of the item. All items must be received by the Friday before the dinner. Questions? Contact *Janet Hummel* at 503-359-1799 or janet.hummel@verizon.net. Donations from businesses are welcome. Please note that all items must be either new or in "as new" condition!

Craft Sale: We welcome donations of baked goods, candy, sewing/stitchery, & other salable crafts. Contact Lois Oakberg, 503-357-8129 or tomatoseed@comcast.net.

The Swiss Steak Dinner, Craft Sale & Auction are major fundraisers for the Church...so get ready for some hard work, some delicious food ... but most of all some great fun!

FAMILY CAMP PLANNING SESSION

Anyone who wants to make this year's Family Camp the best ever, please plan on attending a Planning Party on April 15 in the Library after Church. **Pizza** will be served so please RSVP by April 13 to Janet at 503-359-1799 or send an email to janet.hummel@verizon.net. We will be reviewing the schedule, new activities, and assignments for cooking and cleaning – new ideas will be welcome! Fun Fun Fun!



came involved with the young people in the area. They learned that unemployed school dropouts are not limited to the United States. Neither is prejudice. During the time of the Soviet Union, Russians were encouraged to move to the Baltic States as a way to establish Russian influence there. Now that the Soviet Union is history, and Russian influence has faded, these Russians are left isolated in a country where many resent their presence, with some reason. They are at an economic disadvantage, often unemployed, often under-served by schools and social services.

~~~~~

### MISSION SUPPORT THROUGH COVENANT RELATIONSHIP

Beginning this year, Forest Grove UMC will enter a Covenant Relationship to support **Kevin** and **Carol Ann Seckel** in mission in Germany.

Missionaries to Europe? When I was growing up, I thought missionaries were sent to Africa, or Latin America, or China. Not Europe.

We still do send missionaries to the developing world. But Europe and the United States are fertile mission fields too. Kevin and Carol Ann Seckel have served in Alaska and Latvia, and now in Germany. Alaska, okay, there's the Alaska Missionary Conference. And Latvia was long under control of the Soviet Union, so we expect the church there could use help. But Germany?

Most of us have far too limited an idea of the opportunities for the mission field. I used to think missionaries brought education or medical care, or ran Sunday Schools and converted folk to Christ. Which isn't wrong, so much as it is incomplete. Consider what Kevin and Carol Ann did in Latvia. They started with Bible study and prayer, with small groups meeting in homes. As they got to know people and shared their lives, the Seckels be-

Kevin and Carol Ann found young people separated by language, economic status, and culture. They hated one another, or thought they did. Latvians were reluctant to come to a meeting if Russians would be there, and vice versa. The Seckels' real achievement was not just teaching Bible study, but getting Latvian and ethnic Russian youth to sit down together in one room. They also gave unemployed, out-of-school Russian teenagers a chance to get practical skills and a sense of their own worth and accomplishment, by – can you believe this? – building sports cars. But that's too long a story to tell here. Some time in the next few years, the Seckels will visit our congregation to interpret their work. Ask Kevin then.

No one knows what unexpected opportunities Kevin and Carol Ann will find in Germany. They will serve an English-speaking Christian community, and the larger immigrant community around it. They will serve people primarily from Africa and the Middle East, in a country where issues of race, ethnicity and immigration are different from ours in the U.S., but no less intense -- and where the Christian church has been decreasing.

I don't doubt they'll find work to do.

*Liz Swenson*

**THE BELLS ARE CALLING**

One of the sounds I love is hearing our church’s bell calling all to worship on Sundays; it is such a welcoming sound. Our bell choir is extending this joyous welcome into our sanctuary, in praise to the Lord. Bells have been used in worship of God throughout recorded history. The Latin “cymbala” can be translated either as cymbals or bells:

“David and all the Israelites were celebrating with all their might before God, with songs and with harps, lyres, tambourines, cymbals and trumpets.” 1 Chronicles 13:8

We have begun to shop for our own bells and equipment. This is an opportunity for members to support our ministry with memorial or honorary gifts to these purchases. We are celebrating with all our might! Please designate donations “Bells” on your offering envelopes. Contact **Betty Pritchard** at 503-359-9340 or [b2c2@netscape.com](mailto:b2c2@netscape.com) for questions.

Submitted by **Carole Heun**

**SECOND SATURDAY GARDEN PARTY**

We'll meet on April 14th at 8:30 AM and go home no later than noon (sooner if you need to leave early). Bring your work gloves and garden tools.

There will be a few treats to keep you going. Come and share the camaraderie!

**Margaret Hoerber**

**THANK YOU CARD**

I want to thank all of you for your prayers, cards and calls during my surgery and recovery. They were really appreciated.

**Mable Compton**

**BREAKFAST CLUB**

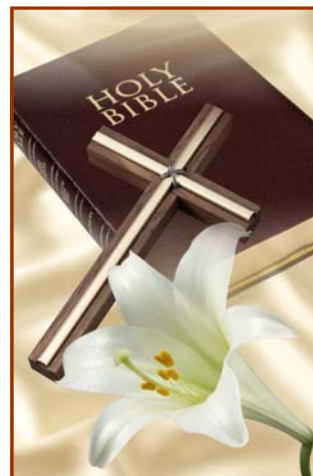
Let the Youth prepare breakfast for you! Chat with old friends and make new friends. Donations go to the Youth Group. April 14th at 9:30 a.m.

**APRIL BIRTHDAYS**

|                      |                        |
|----------------------|------------------------|
| Margaret Harshbarger | April 1 <sup>st</sup>  |
| Mablerose Hanna      | April 4 <sup>th</sup>  |
| Stephen Gapay        | April 6 <sup>th</sup>  |
| Ruth Reese           | April 7 <sup>th</sup>  |
| Ted Oakberg          | April 8 <sup>th</sup>  |
| Priscilla Stinman    | April 10 <sup>th</sup> |
| Ed Davie             | April 11 <sup>th</sup> |
| Logan Anderson       | April 12 <sup>th</sup> |
| Rachel Hampton       | April 12 <sup>th</sup> |
| Connor Dionne        | April 13 <sup>th</sup> |
| Matthew Hampton      | April 13 <sup>th</sup> |
| Mary Olson           | April 14 <sup>th</sup> |
| Oliver Cobb          | April 15 <sup>th</sup> |
| Lindsay Spangler     | April 19 <sup>th</sup> |
| Frank Colcord        | April 19 <sup>th</sup> |
| Loyd Wells           | April 19 <sup>th</sup> |
| Buzz Brown           | April 22 <sup>nd</sup> |
| Alyssa Bond          | April 24 <sup>th</sup> |
| Marion Gustafson     | April 26 <sup>th</sup> |
| Lloyd Uecker         | April 29 <sup>th</sup> |

**APRIL ANNIVERSARIES**

|                      |                       |
|----------------------|-----------------------|
| Floyd & Verva Loomis | April 4 <sup>th</sup> |
|----------------------|-----------------------|



# FOREST GROVE UMC CALENDAR, APRIL 2007

| Sunday                                                                                                                                                                                                                                                                                                                   | Monday                                                    | Tuesday                                                                                                                              | Wednesday                                                                                                                                                                                                                                                                                                                                                                                                                                                                                                                                                                                                                                                                                                                                                                                                                                                                                                                                                                                                                                                                                                                                                                                                                                                                                                                                                                                            | Thursday                                                                                                                                             | Friday                                                                                                                                    | Saturday                                                                                                                                |   |   |   |   |   |   |   |  |  |  |  |   |   |   |   |   |   |   |   |   |    |    |    |    |    |    |    |    |    |    |    |    |    |    |    |    |    |    |    |    |    |    |   |   |   |   |   |   |   |  |  |   |   |   |   |   |   |   |   |   |    |    |    |    |    |    |    |    |    |    |    |    |    |    |    |    |    |    |    |    |    |    |  |  |
|--------------------------------------------------------------------------------------------------------------------------------------------------------------------------------------------------------------------------------------------------------------------------------------------------------------------------|-----------------------------------------------------------|--------------------------------------------------------------------------------------------------------------------------------------|------------------------------------------------------------------------------------------------------------------------------------------------------------------------------------------------------------------------------------------------------------------------------------------------------------------------------------------------------------------------------------------------------------------------------------------------------------------------------------------------------------------------------------------------------------------------------------------------------------------------------------------------------------------------------------------------------------------------------------------------------------------------------------------------------------------------------------------------------------------------------------------------------------------------------------------------------------------------------------------------------------------------------------------------------------------------------------------------------------------------------------------------------------------------------------------------------------------------------------------------------------------------------------------------------------------------------------------------------------------------------------------------------|------------------------------------------------------------------------------------------------------------------------------------------------------|-------------------------------------------------------------------------------------------------------------------------------------------|-----------------------------------------------------------------------------------------------------------------------------------------|---|---|---|---|---|---|---|--|--|--|--|---|---|---|---|---|---|---|---|---|----|----|----|----|----|----|----|----|----|----|----|----|----|----|----|----|----|----|----|----|----|----|---|---|---|---|---|---|---|--|--|---|---|---|---|---|---|---|---|---|----|----|----|----|----|----|----|----|----|----|----|----|----|----|----|----|----|----|----|----|----|----|--|--|
| 1                                                                                                                                                                                                                                                                                                                        | 2                                                         | 3                                                                                                                                    | 4                                                                                                                                                                                                                                                                                                                                                                                                                                                                                                                                                                                                                                                                                                                                                                                                                                                                                                                                                                                                                                                                                                                                                                                                                                                                                                                                                                                                    | 5                                                                                                                                                    | 6                                                                                                                                         | 7                                                                                                                                       |   |   |   |   |   |   |   |  |  |  |  |   |   |   |   |   |   |   |   |   |    |    |    |    |    |    |    |    |    |    |    |    |    |    |    |    |    |    |    |    |    |    |   |   |   |   |   |   |   |  |  |   |   |   |   |   |   |   |   |   |    |    |    |    |    |    |    |    |    |    |    |    |    |    |    |    |    |    |    |    |    |    |  |  |
| <p>9:00 a.m. <b>PowerXpress</b></p> <p>10:00 <b>Worship</b></p> <p>11:00 a.m. <b>Fellowship</b></p> <p>1:00 p.m. <b>Outreach</b></p> <p>5:30 p.m. <b>Disciples Bible Study</b></p> <p>6:00 p.m.—8:00 p.m. <b>Youth Group</b></p>                                                                                         |                                                           | <p>9:00 a.m. <b>Lectionary Bible Study</b> in Library</p> <p>7:00 p.m. <b>Wesleyans</b></p>                                          | <p>11:00 a.m. <b>Staff Meeting</b></p> <p><b>PLUNGE After school Elementary program.</b> 4:00—6:30 p.m.</p> <p>7:00 p.m. <b>Church Council</b></p>                                                                                                                                                                                                                                                                                                                                                                                                                                                                                                                                                                                                                                                                                                                                                                                                                                                                                                                                                                                                                                                                                                                                                                                                                                                   | <p><b>Maundy Thursday</b></p>                                                                                                                        | <p><b>Good Friday</b></p>                                                                                                                 |                                                                                                                                         |   |   |   |   |   |   |   |  |  |  |  |   |   |   |   |   |   |   |   |   |    |    |    |    |    |    |    |    |    |    |    |    |    |    |    |    |    |    |    |    |    |    |   |   |   |   |   |   |   |  |  |   |   |   |   |   |   |   |   |   |    |    |    |    |    |    |    |    |    |    |    |    |    |    |    |    |    |    |    |    |    |    |  |  |
| 8                                                                                                                                                                                                                                                                                                                        | 9                                                         | 10                                                                                                                                   | 11                                                                                                                                                                                                                                                                                                                                                                                                                                                                                                                                                                                                                                                                                                                                                                                                                                                                                                                                                                                                                                                                                                                                                                                                                                                                                                                                                                                                   | 12                                                                                                                                                   | 13                                                                                                                                        | 14                                                                                                                                      |   |   |   |   |   |   |   |  |  |  |  |   |   |   |   |   |   |   |   |   |    |    |    |    |    |    |    |    |    |    |    |    |    |    |    |    |    |    |    |    |    |    |   |   |   |   |   |   |   |  |  |   |   |   |   |   |   |   |   |   |    |    |    |    |    |    |    |    |    |    |    |    |    |    |    |    |    |    |    |    |    |    |  |  |
| <p><b>Easter</b></p>                                                                                                                                                                                                                                                                                                     | <p>6:30 p.m. <b>Education Committee</b></p>               | <p>9:00 a.m. <b>Lectionary Bible Study</b> in Library</p> <p><b>NO SPRC</b></p>                                                      | <p>11:00 a.m. <b>Staff Meeting</b></p> <p><b>PLUNGE After school Elementary program.</b> 4:00—6:30 p.m.</p> <p>6:30 p.m. <b>Worship Committee</b></p>                                                                                                                                                                                                                                                                                                                                                                                                                                                                                                                                                                                                                                                                                                                                                                                                                                                                                                                                                                                                                                                                                                                                                                                                                                                | <p>6:00-7:00 p.m. <b>Open Room/Guitar Lessons</b></p> <p>6:00 p.m. <b>Safe Sanctuary Committee</b></p> <p>7:00 — 8:30 p.m. <b>Choir practice</b></p> | <p>Office Closed</p> <p><b>Pastor's Day Off</b></p>                                                                                       | <p><b>Breakfast Club</b><br/>Youth: 8:30 a.m.<br/>Serve: 9:30-11:00 a.m.</p> <p>8:30 a.m.—Noon <b>Second Saturday Garden party</b></p>  |   |   |   |   |   |   |   |  |  |  |  |   |   |   |   |   |   |   |   |   |    |    |    |    |    |    |    |    |    |    |    |    |    |    |    |    |    |    |    |    |    |    |   |   |   |   |   |   |   |  |  |   |   |   |   |   |   |   |   |   |    |    |    |    |    |    |    |    |    |    |    |    |    |    |    |    |    |    |    |    |    |    |  |  |
| 15                                                                                                                                                                                                                                                                                                                       | 16                                                        | 17                                                                                                                                   | 18                                                                                                                                                                                                                                                                                                                                                                                                                                                                                                                                                                                                                                                                                                                                                                                                                                                                                                                                                                                                                                                                                                                                                                                                                                                                                                                                                                                                   | 19                                                                                                                                                   | 20                                                                                                                                        | 21                                                                                                                                      |   |   |   |   |   |   |   |  |  |  |  |   |   |   |   |   |   |   |   |   |    |    |    |    |    |    |    |    |    |    |    |    |    |    |    |    |    |    |    |    |    |    |   |   |   |   |   |   |   |  |  |   |   |   |   |   |   |   |   |   |    |    |    |    |    |    |    |    |    |    |    |    |    |    |    |    |    |    |    |    |    |    |  |  |
| <p>9:00 a.m. <b>PowerXpress</b></p> <p>10:00 <b>Worship</b></p> <p>11:00 a.m. <b>Fellowship</b></p> <p>11:30-1:30 p.m. <b>Planning for Camp Magruder in the Library</b></p> <p>12:30-2:30 p.m. <b>Confirmation Class</b></p> <p>5:30 p.m. <b>Disciples Bible Study</b></p> <p>6:00 p.m.—8:00 p.m. <b>Youth Group</b></p> | <p>2:00 p.m. <b>Jennings McCall Group</b></p>             | <p>9:00 a.m. <b>Lectionary Bible Study</b> in Library</p> <p>7:00 p.m. <b>Trustees</b></p>                                           | <p><b>PLUNGE After school Elementary program.</b> 4:00—6:30 p.m.</p>                                                                                                                                                                                                                                                                                                                                                                                                                                                                                                                                                                                                                                                                                                                                                                                                                                                                                                                                                                                                                                                                                                                                                                                                                                                                                                                                 | <p>6:00—7:00 p.m. <b>Open Room/Guitar Lessons</b></p> <p>7:00 — 8:30 p.m. <b>Choir practice</b></p>                                                  | <p>Office Closed</p> <p><b>Pastor's Day Off</b></p> <p style="color: red; text-align: center;"> <b>Messenger articles due today!</b> </p> | <p>10:00 a.m. <b>Grant Committee</b></p> <p style="color: green; text-align: center;"> <b>Swiss Steak Dinner 4:00 to 7:00 p.m.</b> </p> |   |   |   |   |   |   |   |  |  |  |  |   |   |   |   |   |   |   |   |   |    |    |    |    |    |    |    |    |    |    |    |    |    |    |    |    |    |    |    |    |    |    |   |   |   |   |   |   |   |  |  |   |   |   |   |   |   |   |   |   |    |    |    |    |    |    |    |    |    |    |    |    |    |    |    |    |    |    |    |    |    |    |  |  |
| 22                                                                                                                                                                                                                                                                                                                       | 23                                                        | 24                                                                                                                                   | 25                                                                                                                                                                                                                                                                                                                                                                                                                                                                                                                                                                                                                                                                                                                                                                                                                                                                                                                                                                                                                                                                                                                                                                                                                                                                                                                                                                                                   | 26                                                                                                                                                   | 27                                                                                                                                        | 28                                                                                                                                      |   |   |   |   |   |   |   |  |  |  |  |   |   |   |   |   |   |   |   |   |    |    |    |    |    |    |    |    |    |    |    |    |    |    |    |    |    |    |    |    |    |    |   |   |   |   |   |   |   |  |  |   |   |   |   |   |   |   |   |   |    |    |    |    |    |    |    |    |    |    |    |    |    |    |    |    |    |    |    |    |    |    |  |  |
| <p>9:00 a.m. <b>PowerXpress</b></p> <p>10:00 <b>Worship</b></p> <p>11:00 a.m. <b>Fellowship</b></p> <p>12:30-2:30 p.m. <b>Confirmation Class</b></p> <p>5:30 p.m. <b>Disciples Bible Study</b></p> <p>6:00 p.m.—8:00 p.m. <b>Youth Group</b></p>                                                                         |                                                           | <p>9:00 a.m. <b>Lectionary Bible Study</b> in Library</p> <p>2:00 p.m. <b>The Elms</b></p> <p>7:30 p.m. <b>Finance Committee</b></p> | <p>11:00 a.m. <b>Staff Meeting</b></p> <p><b>PLUNGE After school Elementary program.</b> 4:00—6:30 p.m.</p>                                                                                                                                                                                                                                                                                                                                                                                                                                                                                                                                                                                                                                                                                                                                                                                                                                                                                                                                                                                                                                                                                                                                                                                                                                                                                          | <p>6:00—7:00 p.m. <b>Open Room/Guitar Lessons</b></p> <p>6:00 p.m. <b>Safe Sanctuary Committee</b></p> <p>7:00 — 8:30 p.m. <b>Choir practice</b></p> | <p>Office Closed</p> <p><b>Pastor's Day Off</b></p> <p>2:00 p.m. <b>UMW &amp; Friends Jennings McCall</b></p>                             |                                                                                                                                         |   |   |   |   |   |   |   |  |  |  |  |   |   |   |   |   |   |   |   |   |    |    |    |    |    |    |    |    |    |    |    |    |    |    |    |    |    |    |    |    |    |    |   |   |   |   |   |   |   |  |  |   |   |   |   |   |   |   |   |   |    |    |    |    |    |    |    |    |    |    |    |    |    |    |    |    |    |    |    |    |    |    |  |  |
| <p>&lt;&lt;&lt;&lt; Youth Confirmation Retreat &gt;&gt;&gt;&gt;</p>                                                                                                                                                                                                                                                      |                                                           |                                                                                                                                      |                                                                                                                                                                                                                                                                                                                                                                                                                                                                                                                                                                                                                                                                                                                                                                                                                                                                                                                                                                                                                                                                                                                                                                                                                                                                                                                                                                                                      |                                                                                                                                                      |                                                                                                                                           |                                                                                                                                         |   |   |   |   |   |   |   |  |  |  |  |   |   |   |   |   |   |   |   |   |    |    |    |    |    |    |    |    |    |    |    |    |    |    |    |    |    |    |    |    |    |    |   |   |   |   |   |   |   |  |  |   |   |   |   |   |   |   |   |   |    |    |    |    |    |    |    |    |    |    |    |    |    |    |    |    |    |    |    |    |    |    |  |  |
| 29                                                                                                                                                                                                                                                                                                                       | 30                                                        |                                                                                                                                      | <div style="display: flex; justify-content: space-around;"> <div style="text-align: center;"> <p><b>March</b></p> <table border="1" style="border-collapse: collapse; text-align: center;"> <tr><td>S</td><td>M</td><td>T</td><td>W</td><td>T</td><td>F</td><td>S</td></tr> <tr><td></td><td></td><td></td><td></td><td>1</td><td>2</td><td>3</td></tr> <tr><td>4</td><td>5</td><td>6</td><td>7</td><td>8</td><td>9</td><td>10</td></tr> <tr><td>11</td><td>12</td><td>13</td><td>14</td><td>15</td><td>16</td><td>17</td></tr> <tr><td>18</td><td>19</td><td>20</td><td>21</td><td>22</td><td>23</td><td>24</td></tr> <tr><td>25</td><td>26</td><td>27</td><td>28</td><td>29</td><td>30</td><td>31</td></tr> </table> </div> <div style="text-align: center;"> <p><b>May</b></p> <table border="1" style="border-collapse: collapse; text-align: center;"> <tr><td>S</td><td>M</td><td>T</td><td>W</td><td>T</td><td>F</td><td>S</td></tr> <tr><td></td><td></td><td>1</td><td>2</td><td>3</td><td>4</td><td>5</td></tr> <tr><td>6</td><td>7</td><td>8</td><td>9</td><td>10</td><td>11</td><td>12</td></tr> <tr><td>13</td><td>14</td><td>15</td><td>16</td><td>17</td><td>18</td><td>19</td></tr> <tr><td>20</td><td>21</td><td>22</td><td>23</td><td>24</td><td>25</td><td>26</td></tr> <tr><td>27</td><td>28</td><td>29</td><td>30</td><td>31</td><td></td><td></td></tr> </table> </div> </div> |                                                                                                                                                      |                                                                                                                                           |                                                                                                                                         | S | M | T | W | T | F | S |  |  |  |  | 1 | 2 | 3 | 4 | 5 | 6 | 7 | 8 | 9 | 10 | 11 | 12 | 13 | 14 | 15 | 16 | 17 | 18 | 19 | 20 | 21 | 22 | 23 | 24 | 25 | 26 | 27 | 28 | 29 | 30 | 31 | S | M | T | W | T | F | S |  |  | 1 | 2 | 3 | 4 | 5 | 6 | 7 | 8 | 9 | 10 | 11 | 12 | 13 | 14 | 15 | 16 | 17 | 18 | 19 | 20 | 21 | 22 | 23 | 24 | 25 | 26 | 27 | 28 | 29 | 30 | 31 |  |  |
| S                                                                                                                                                                                                                                                                                                                        | M                                                         | T                                                                                                                                    | W                                                                                                                                                                                                                                                                                                                                                                                                                                                                                                                                                                                                                                                                                                                                                                                                                                                                                                                                                                                                                                                                                                                                                                                                                                                                                                                                                                                                    | T                                                                                                                                                    | F                                                                                                                                         | S                                                                                                                                       |   |   |   |   |   |   |   |  |  |  |  |   |   |   |   |   |   |   |   |   |    |    |    |    |    |    |    |    |    |    |    |    |    |    |    |    |    |    |    |    |    |    |   |   |   |   |   |   |   |  |  |   |   |   |   |   |   |   |   |   |    |    |    |    |    |    |    |    |    |    |    |    |    |    |    |    |    |    |    |    |    |    |  |  |
|                                                                                                                                                                                                                                                                                                                          |                                                           |                                                                                                                                      |                                                                                                                                                                                                                                                                                                                                                                                                                                                                                                                                                                                                                                                                                                                                                                                                                                                                                                                                                                                                                                                                                                                                                                                                                                                                                                                                                                                                      | 1                                                                                                                                                    | 2                                                                                                                                         | 3                                                                                                                                       |   |   |   |   |   |   |   |  |  |  |  |   |   |   |   |   |   |   |   |   |    |    |    |    |    |    |    |    |    |    |    |    |    |    |    |    |    |    |    |    |    |    |   |   |   |   |   |   |   |  |  |   |   |   |   |   |   |   |   |   |    |    |    |    |    |    |    |    |    |    |    |    |    |    |    |    |    |    |    |    |    |    |  |  |
| 4                                                                                                                                                                                                                                                                                                                        | 5                                                         | 6                                                                                                                                    | 7                                                                                                                                                                                                                                                                                                                                                                                                                                                                                                                                                                                                                                                                                                                                                                                                                                                                                                                                                                                                                                                                                                                                                                                                                                                                                                                                                                                                    | 8                                                                                                                                                    | 9                                                                                                                                         | 10                                                                                                                                      |   |   |   |   |   |   |   |  |  |  |  |   |   |   |   |   |   |   |   |   |    |    |    |    |    |    |    |    |    |    |    |    |    |    |    |    |    |    |    |    |    |    |   |   |   |   |   |   |   |  |  |   |   |   |   |   |   |   |   |   |    |    |    |    |    |    |    |    |    |    |    |    |    |    |    |    |    |    |    |    |    |    |  |  |
| 11                                                                                                                                                                                                                                                                                                                       | 12                                                        | 13                                                                                                                                   | 14                                                                                                                                                                                                                                                                                                                                                                                                                                                                                                                                                                                                                                                                                                                                                                                                                                                                                                                                                                                                                                                                                                                                                                                                                                                                                                                                                                                                   | 15                                                                                                                                                   | 16                                                                                                                                        | 17                                                                                                                                      |   |   |   |   |   |   |   |  |  |  |  |   |   |   |   |   |   |   |   |   |    |    |    |    |    |    |    |    |    |    |    |    |    |    |    |    |    |    |    |    |    |    |   |   |   |   |   |   |   |  |  |   |   |   |   |   |   |   |   |   |    |    |    |    |    |    |    |    |    |    |    |    |    |    |    |    |    |    |    |    |    |    |  |  |
| 18                                                                                                                                                                                                                                                                                                                       | 19                                                        | 20                                                                                                                                   | 21                                                                                                                                                                                                                                                                                                                                                                                                                                                                                                                                                                                                                                                                                                                                                                                                                                                                                                                                                                                                                                                                                                                                                                                                                                                                                                                                                                                                   | 22                                                                                                                                                   | 23                                                                                                                                        | 24                                                                                                                                      |   |   |   |   |   |   |   |  |  |  |  |   |   |   |   |   |   |   |   |   |    |    |    |    |    |    |    |    |    |    |    |    |    |    |    |    |    |    |    |    |    |    |   |   |   |   |   |   |   |  |  |   |   |   |   |   |   |   |   |   |    |    |    |    |    |    |    |    |    |    |    |    |    |    |    |    |    |    |    |    |    |    |  |  |
| 25                                                                                                                                                                                                                                                                                                                       | 26                                                        | 27                                                                                                                                   | 28                                                                                                                                                                                                                                                                                                                                                                                                                                                                                                                                                                                                                                                                                                                                                                                                                                                                                                                                                                                                                                                                                                                                                                                                                                                                                                                                                                                                   | 29                                                                                                                                                   | 30                                                                                                                                        | 31                                                                                                                                      |   |   |   |   |   |   |   |  |  |  |  |   |   |   |   |   |   |   |   |   |    |    |    |    |    |    |    |    |    |    |    |    |    |    |    |    |    |    |    |    |    |    |   |   |   |   |   |   |   |  |  |   |   |   |   |   |   |   |   |   |    |    |    |    |    |    |    |    |    |    |    |    |    |    |    |    |    |    |    |    |    |    |  |  |
| S                                                                                                                                                                                                                                                                                                                        | M                                                         | T                                                                                                                                    | W                                                                                                                                                                                                                                                                                                                                                                                                                                                                                                                                                                                                                                                                                                                                                                                                                                                                                                                                                                                                                                                                                                                                                                                                                                                                                                                                                                                                    | T                                                                                                                                                    | F                                                                                                                                         | S                                                                                                                                       |   |   |   |   |   |   |   |  |  |  |  |   |   |   |   |   |   |   |   |   |    |    |    |    |    |    |    |    |    |    |    |    |    |    |    |    |    |    |    |    |    |    |   |   |   |   |   |   |   |  |  |   |   |   |   |   |   |   |   |   |    |    |    |    |    |    |    |    |    |    |    |    |    |    |    |    |    |    |    |    |    |    |  |  |
|                                                                                                                                                                                                                                                                                                                          |                                                           | 1                                                                                                                                    | 2                                                                                                                                                                                                                                                                                                                                                                                                                                                                                                                                                                                                                                                                                                                                                                                                                                                                                                                                                                                                                                                                                                                                                                                                                                                                                                                                                                                                    | 3                                                                                                                                                    | 4                                                                                                                                         | 5                                                                                                                                       |   |   |   |   |   |   |   |  |  |  |  |   |   |   |   |   |   |   |   |   |    |    |    |    |    |    |    |    |    |    |    |    |    |    |    |    |    |    |    |    |    |    |   |   |   |   |   |   |   |  |  |   |   |   |   |   |   |   |   |   |    |    |    |    |    |    |    |    |    |    |    |    |    |    |    |    |    |    |    |    |    |    |  |  |
| 6                                                                                                                                                                                                                                                                                                                        | 7                                                         | 8                                                                                                                                    | 9                                                                                                                                                                                                                                                                                                                                                                                                                                                                                                                                                                                                                                                                                                                                                                                                                                                                                                                                                                                                                                                                                                                                                                                                                                                                                                                                                                                                    | 10                                                                                                                                                   | 11                                                                                                                                        | 12                                                                                                                                      |   |   |   |   |   |   |   |  |  |  |  |   |   |   |   |   |   |   |   |   |    |    |    |    |    |    |    |    |    |    |    |    |    |    |    |    |    |    |    |    |    |    |   |   |   |   |   |   |   |  |  |   |   |   |   |   |   |   |   |   |    |    |    |    |    |    |    |    |    |    |    |    |    |    |    |    |    |    |    |    |    |    |  |  |
| 13                                                                                                                                                                                                                                                                                                                       | 14                                                        | 15                                                                                                                                   | 16                                                                                                                                                                                                                                                                                                                                                                                                                                                                                                                                                                                                                                                                                                                                                                                                                                                                                                                                                                                                                                                                                                                                                                                                                                                                                                                                                                                                   | 17                                                                                                                                                   | 18                                                                                                                                        | 19                                                                                                                                      |   |   |   |   |   |   |   |  |  |  |  |   |   |   |   |   |   |   |   |   |    |    |    |    |    |    |    |    |    |    |    |    |    |    |    |    |    |    |    |    |    |    |   |   |   |   |   |   |   |  |  |   |   |   |   |   |   |   |   |   |    |    |    |    |    |    |    |    |    |    |    |    |    |    |    |    |    |    |    |    |    |    |  |  |
| 20                                                                                                                                                                                                                                                                                                                       | 21                                                        | 22                                                                                                                                   | 23                                                                                                                                                                                                                                                                                                                                                                                                                                                                                                                                                                                                                                                                                                                                                                                                                                                                                                                                                                                                                                                                                                                                                                                                                                                                                                                                                                                                   | 24                                                                                                                                                   | 25                                                                                                                                        | 26                                                                                                                                      |   |   |   |   |   |   |   |  |  |  |  |   |   |   |   |   |   |   |   |   |    |    |    |    |    |    |    |    |    |    |    |    |    |    |    |    |    |    |    |    |    |    |   |   |   |   |   |   |   |  |  |   |   |   |   |   |   |   |   |   |    |    |    |    |    |    |    |    |    |    |    |    |    |    |    |    |    |    |    |    |    |    |  |  |
| 27                                                                                                                                                                                                                                                                                                                       | 28                                                        | 29                                                                                                                                   | 30                                                                                                                                                                                                                                                                                                                                                                                                                                                                                                                                                                                                                                                                                                                                                                                                                                                                                                                                                                                                                                                                                                                                                                                                                                                                                                                                                                                                   | 31                                                                                                                                                   |                                                                                                                                           |                                                                                                                                         |   |   |   |   |   |   |   |  |  |  |  |   |   |   |   |   |   |   |   |   |    |    |    |    |    |    |    |    |    |    |    |    |    |    |    |    |    |    |    |    |    |    |   |   |   |   |   |   |   |  |  |   |   |   |   |   |   |   |   |   |    |    |    |    |    |    |    |    |    |    |    |    |    |    |    |    |    |    |    |    |    |    |  |  |
| <p>9:00 a.m. <b>PowerXpress</b></p> <p>10:00 <b>Worship</b></p> <p>11:00 a.m. <b>Fellowship</b></p> <p>5:30 p.m. <b>Disciples Bible Study</b></p>                                                                                                                                                                        | <p>11:00 a.m. <b>Have committee minutes in office</b></p> |                                                                                                                                      |                                                                                                                                                                                                                                                                                                                                                                                                                                                                                                                                                                                                                                                                                                                                                                                                                                                                                                                                                                                                                                                                                                                                                                                                                                                                                                                                                                                                      |                                                                                                                                                      |                                                                                                                                           |                                                                                                                                         |   |   |   |   |   |   |   |  |  |  |  |   |   |   |   |   |   |   |   |   |    |    |    |    |    |    |    |    |    |    |    |    |    |    |    |    |    |    |    |    |    |    |   |   |   |   |   |   |   |  |  |   |   |   |   |   |   |   |   |   |    |    |    |    |    |    |    |    |    |    |    |    |    |    |    |    |    |    |    |    |    |    |  |  |
| <p>&lt; Youth Confirmation Retreat &gt;&gt;</p>                                                                                                                                                                                                                                                                          |                                                           |                                                                                                                                      |                                                                                                                                                                                                                                                                                                                                                                                                                                                                                                                                                                                                                                                                                                                                                                                                                                                                                                                                                                                                                                                                                                                                                                                                                                                                                                                                                                                                      |                                                                                                                                                      |                                                                                                                                           |                                                                                                                                         |   |   |   |   |   |   |   |  |  |  |  |   |   |   |   |   |   |   |   |   |    |    |    |    |    |    |    |    |    |    |    |    |    |    |    |    |    |    |    |    |    |    |   |   |   |   |   |   |   |  |  |   |   |   |   |   |   |   |   |   |    |    |    |    |    |    |    |    |    |    |    |    |    |    |    |    |    |    |    |    |    |    |  |  |

### CALLING ALL GRANT REQUESTS!

Do you have a funding need for a ministry, mission and outreach activity, or a scholarship for continuing education in Christian faith? The Forest Grove United Methodist Church Grants Committee meets quarterly to review grant requests for these needs. The recommended requests are then submitted to the Finance Committee for consideration. If you have a request, please pick up an Application for Ministry Grant form in the church office, and submit it to Alisa Hampton by the application deadlines below.

Grant applications should strive to meet the mission of the FGUMC or one of the following four categories:

- Ministry
- Mission and Outreach
- Scholarship/Continuing Education
- Operating Reserve

Application for Grant Form Due Date:

- April 13th, 2007 (Friday)
- July 13th, 2007 (Friday)
- October 12th, 2007 (Friday)

Please bring your application, and supporting documentation, to the church office or give to **Alisa Hampton**. You can also email the application form to Alisa at [alisa.hampton@intel.com](mailto:alisa.hampton@intel.com).

### HAVE YOU MOVED?

Please be sure that the church office has your new address. It costs us 75 cents for each item of returned mail.

*Ella Mae James,*  
Church Secretary

### FIRST AID GRADUATES

Dr. **Chuck Pritchard's** recent Red Cross First Aid class has awarded certificates to **Delva Johnson, Richelle Johnson, Meagan Potter, Emily Tabb and Bobby Tabb**. Please talk with Chuck if you are interested in taking the next First Aid class.

### SHOPPING LIST

Here's a handy shopping list of foods most wanted by the food bank. Why don't you clip it out, or jot it down to carry to the grocery store? Remember, the need for food is year-long.

- canned meats (i.e., tuna, chicken, salmon)
  - canned and boxed meals (i.e., soup, chili, stew, macaroni and cheese)
  - peanut butter
  - canned or dried beans and peas (i.e., black, pinto, lentils)
  - pasta, rice, cereal
  - canned fruits
- 100 percent fruit juice (canned, plastic or boxed).  
**Rhoda Pittman Markus**  
503-357-3998 home; 503-201-1233 cell

"If you have come to serve me, I have no need of you. But if you have come because your liberation is bound up in mine, then let us work together."  
**Lila Watson**

### GRANT COMMITTEE UPDATE

Chair: **Alisa Hampton**  
Members: **Edythe Westlund, Bill Gulacy, Ted Oakberg, Pastor Dan Wilson-Fey, Janet Hummel.**

Next meetings: April 21, July 21 and October 20.



## SERVING IN APRIL

|                              |                                           |
|------------------------------|-------------------------------------------|
| <b>Liturgist</b>             | Meagan Potter                             |
| <b>Altar Guild</b>           | Margaret Hoerber                          |
| <b>Bus Coordinator</b>       | Linda King, cell: 503-522-1215            |
| <b>Bus Driver</b>            | Bill Gulacy                               |
| <b>Ushers</b>                | Dave & Laurie Bond<br>Brian & Val Hawkins |
| <b>Greeters</b>              | Larean Hodge, Linda King &<br>Cal Clayton |
| <b>Coffee Coordinator</b>    | Edythe Westlund                           |
| <b>Fellowship Time</b>       |                                           |
| April 1st                    | A. Fool                                   |
| April 8th                    | Heun Family                               |
| April 15th                   | Ann Ulum & Robert Nickerson               |
| April 22nd                   | Volunteer needed                          |
| April 29th                   | Betty Ludlam                              |
| <b>Nursery Attendant</b>     | Hillary Hawkins                           |
| <b>Childcare Coordinator</b> | Delva Johnson                             |
| <b>Web Master</b>            | Jenny LaCombe                             |
| <b>Acolytes</b>              |                                           |
| April 1st                    | John Heun & Fletcher Johnson              |
| April 8th                    | TBA                                       |
| April 15th                   | Noah Wilson-Fey &<br>Connor Dionne        |
| April 22nd                   | Rachel Hampton                            |
| April 29th                   | John Heun & Fletcher Johnson              |
| <b>Kitchen Elf</b>           | Maurine Scott & Pat<br>McClelland         |
| <b>Sound Ministry</b>        | Media operators                           |
| <b>Tape Ministry</b>         | Media team                                |
| <b>Parish Nurse</b>          | Patti Rose                                |

## EDUCATION CORNER

*Michelle Ashton*

You may see the Ashtons roller-blading together as the weather warms. Or at the swimming pool nearly every evening. Family is the vital focus of Michelle and Alan: their children, Kyra (5), Carson (7), and Cade (8).

They have lived in Forest Grove 11 years, since they were married in 1996. Michelle grew up in Junction City, OR, and graduated from Oregon State University. A homemaker, Michelle's hobbies include jogging, reading, tennis and scrap-booking.

The Ashtons are often active with Alan's parents, Chuck and Carolyn Ashton, long-time financial officers for Forest Grove UMC.

And for several Thanksgivings, they have joined Michelle's parents and sister renting a home near the beach and ruins in Tulum, Mexico.

We are grateful that Michelle brings her warm humor and dedication to family to the Education Committee.

## MISSION STATEMENT

The mission of the Forest Grove United Methodist Church is to welcome all people, wherever they are on their journey of faith, into nurturing relationships with Jesus and with one another, through worship, small group fellowship and service to others.

## Open Hearts, Open Minds, Open Doors

Volume 2007

Issue No. 4, **April**

*Messenger* monthly.

Periodicals Postage (USPS 970920) paid at Forest Grove, OR 97116-2434

POSTMASTER: Send address changes to FOREST GROVE UNITED METHODIST CHURCH 1726 Cedar Street, Forest Grove, OR 97116-2434

|                                                                    |              |                  |
|--------------------------------------------------------------------|--------------|------------------|
| <b>Daniel Wilson-Fey</b>                                           | 503-359-4249 | Pastor           |
| <b>Rhoda Pittman Markus</b>                                        | 503-357-3998 | Deacon           |
| <b>Bobby &amp; Emily Tabb</b>                                      | 503-844-7694 | Youth Pastors    |
| <b>Ella Mae James</b>                                              |              | Church Secretary |
| Church Office Hours, Mon. through Thursday                         |              |                  |
| 9:00 a.m. to 12:00 noon                                            |              |                  |
| <b>Patty Davie</b>                                                 | 503-357-3185 | Messenger Editor |
| e-mail: <a href="mailto:plc2fd@verizon.net">plc2fd@verizon.net</a> |              |                  |